

REVISIONS		
NO.	REASON	DATE
1	Revision 1	10/4/19

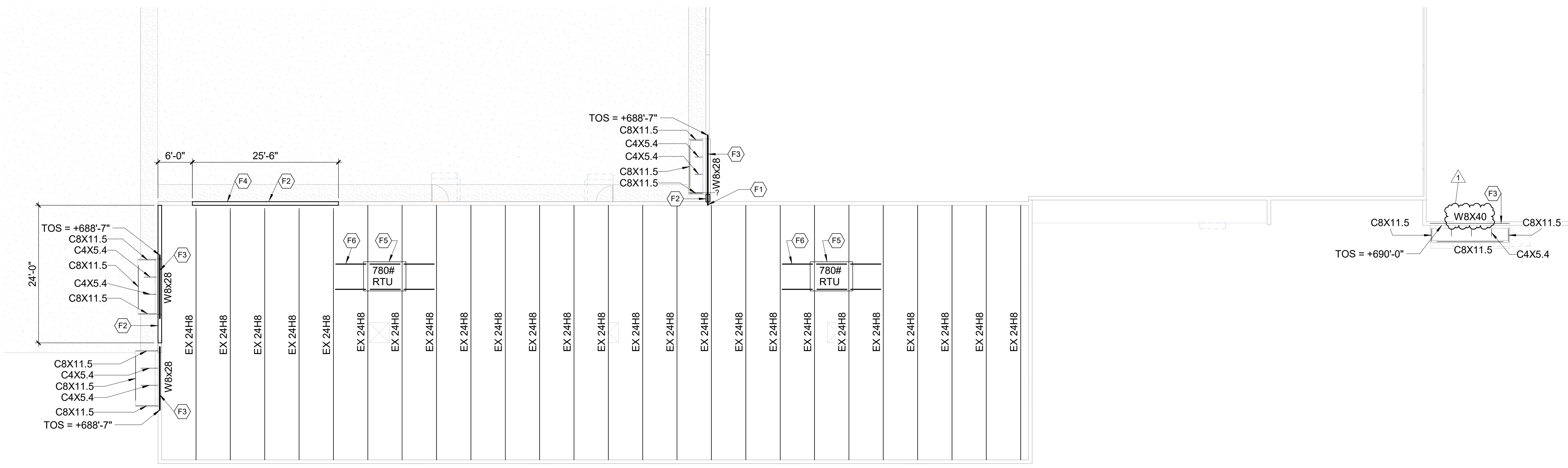
PRINCIPAL IN CHARGE:
D. WALKER

Project Address:
LUCK'S CANNERY - PHASE I
798 NC Hwy. 705 Seagrove, NC 27341

Project Number:
201901

Sheet Title:
FRAMING PLAN

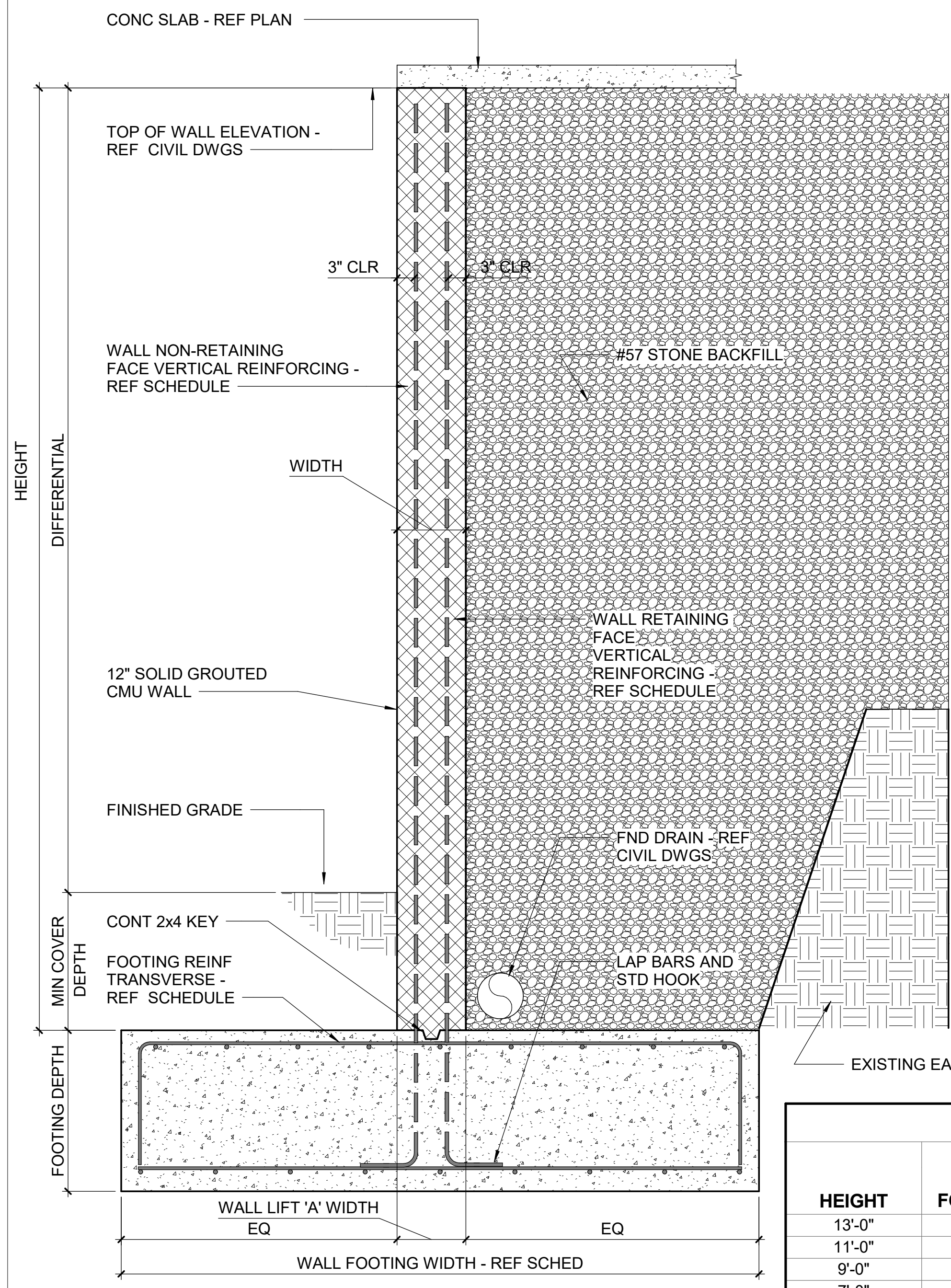
Sheet Number:
S102



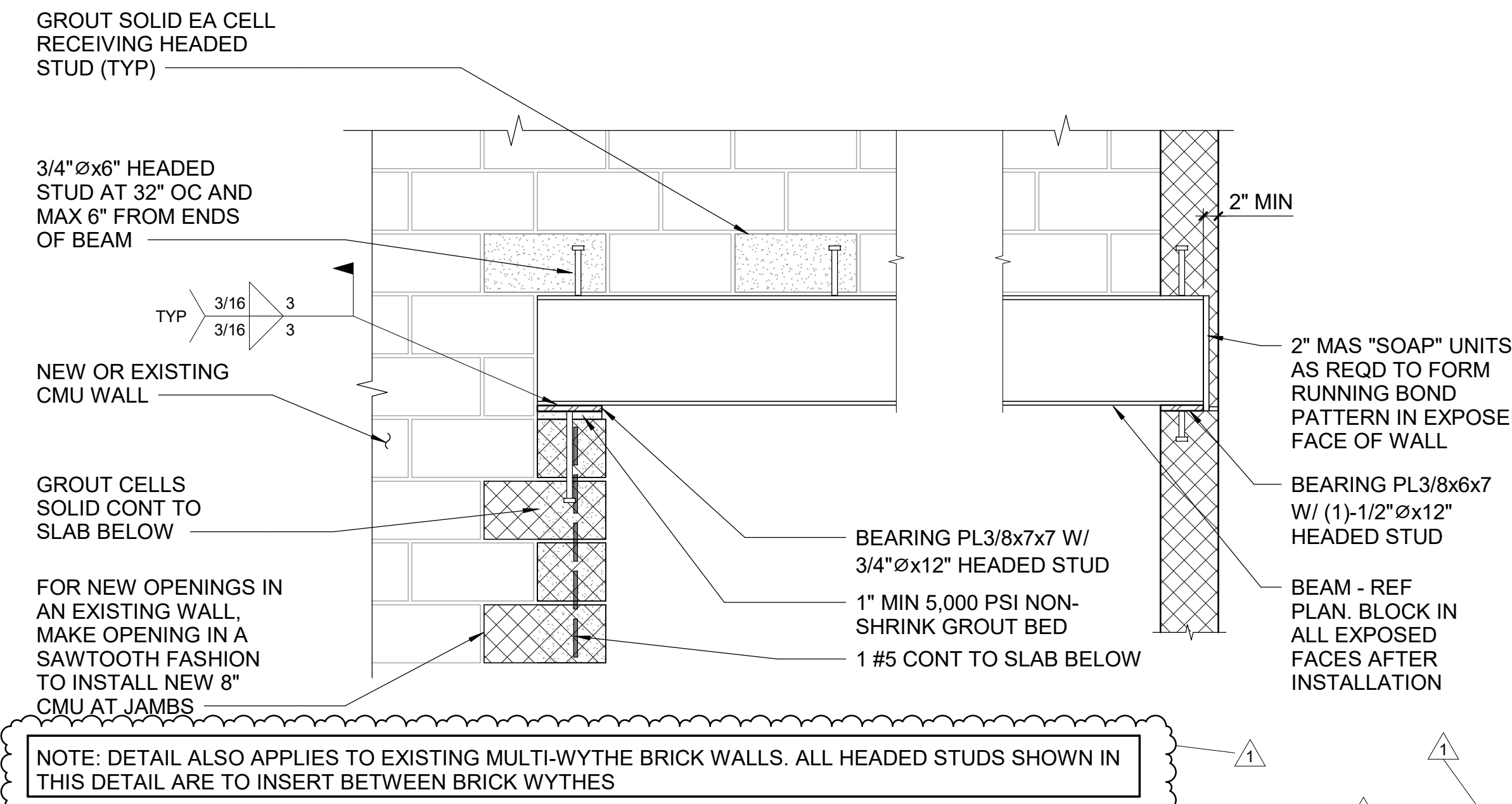
1 FRAMING PLAN
S102 1" = 10'-0"

FLOOR FRAMING PLAN KEY NOTES

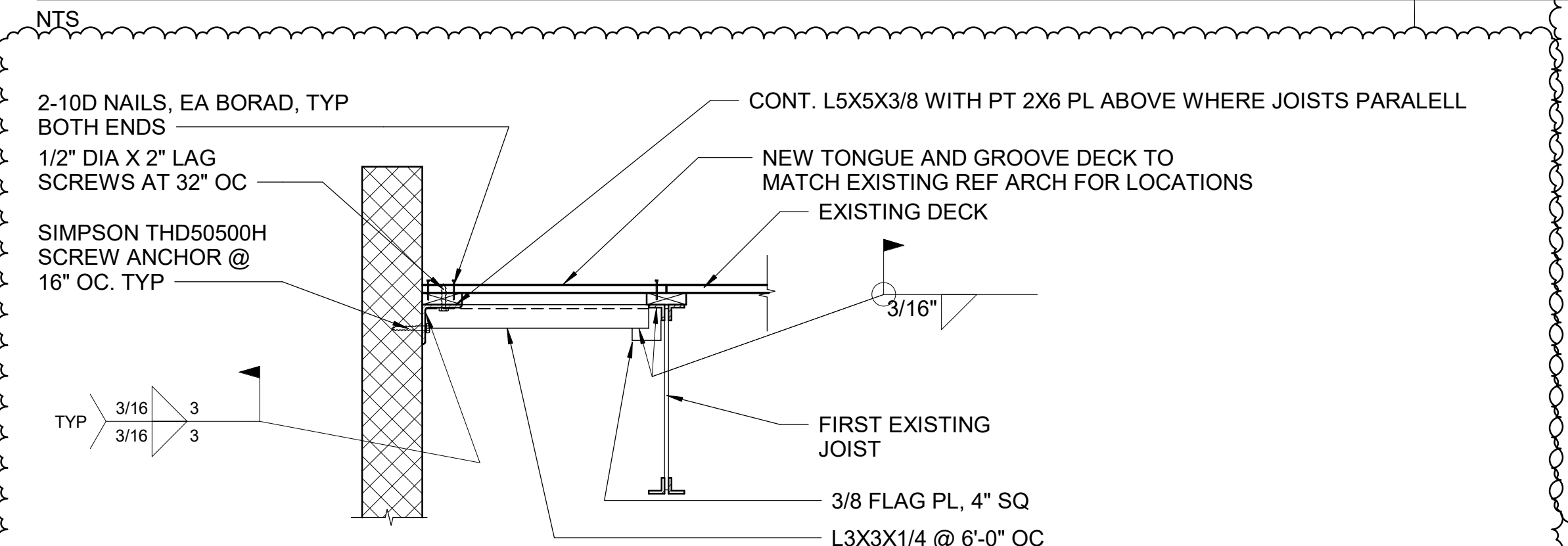
- F1 EXTEND BEAM TO BEAR MIN 6" INTO EXISTING WALL.
- F2 NEW 8" THK SOLID GROUTED CMU REINFORCED W/#5 AT 16" O.C. REF TYPICAL DETAILS FOR ATTACHMENTS TO EXISTING STRUCTURE.
- F3 NEW HEADER FOR STOREFRONT. EXTEND ENDS TO BEAR AS SHOWN IN TYPICAL DETAIL.
- F4 REMOVE EXISTING HEADER, EXISTING COLUMN, AND MASONRY ABOVE
- F5 NEW HVAC RTU TO BE ORIENTED AND CENTERED TO BEAR EVENLY OVER 2 EXISTING JOISTS BELOW.
- F6 LL4X3X5/16 SLBB ANGLE FRAMING BELOW CURBS OF NEW HVAC UNIT. 3/16" FILLET WELD ALL AROUND TO EX JOIST TOP CHORDS, TYP



TYPICAL PATIO RETAINING WALL DETAIL



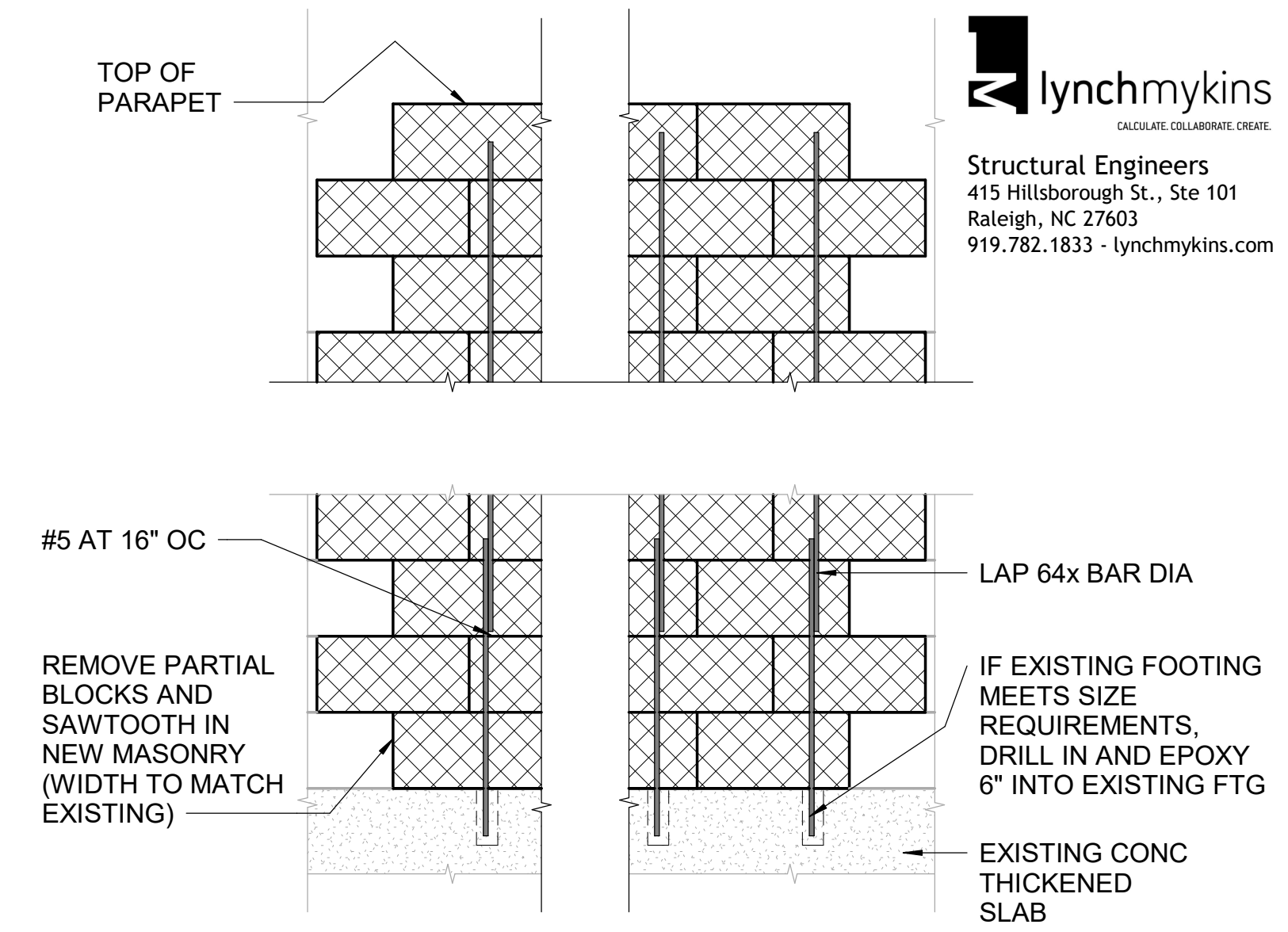
TYPICAL STEEL LINTEL BEARING ON MASONRY WALL DETAIL



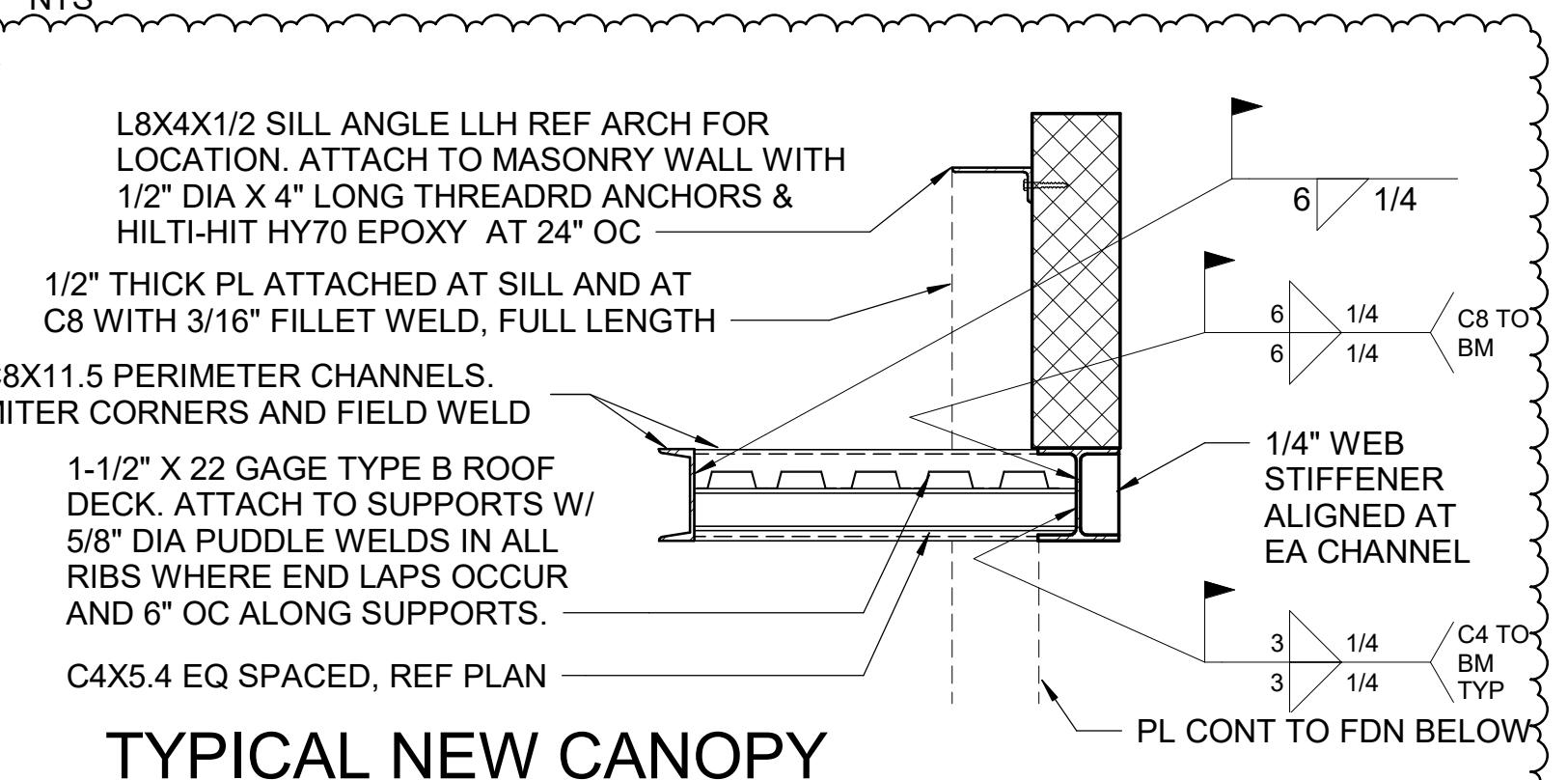
TYPICAL CONNECTION OF NEW MASONRY WALL TO REPAIRED ROOF

SITE RETAINING WALL SCHEDULE

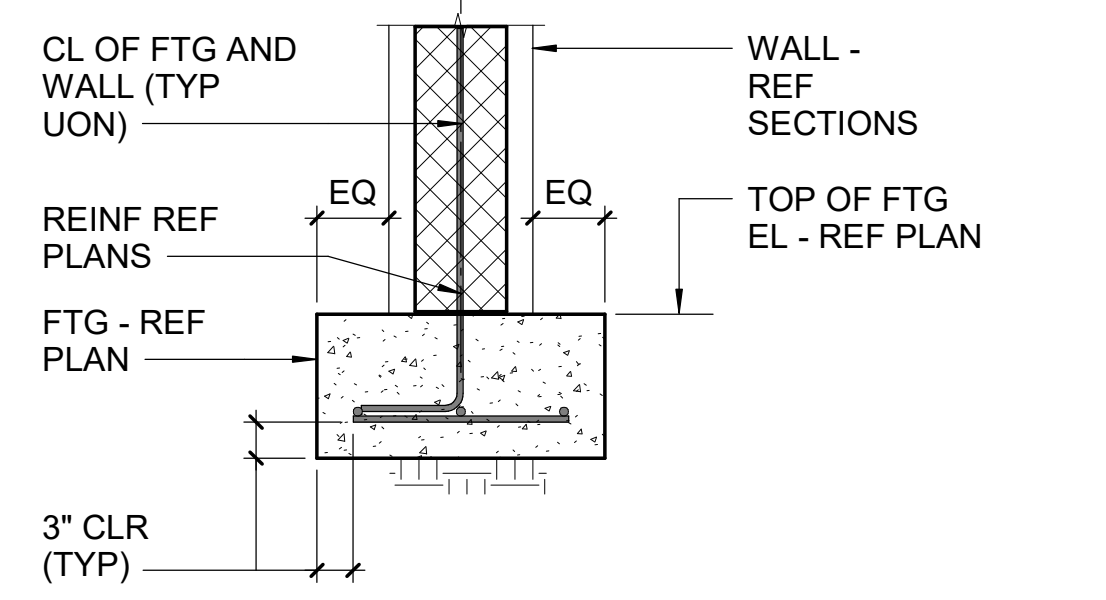
HEIGHT	WALL FOOTING	WIDTH	MIN COVER DEPTH	WALL	
				VERT REINF (RETAINING FACE)	VERT REINF (NON-RETAINING FACE)
13'-0"	WF9.5	11'-5/8"	4'-0"	#9 AT 8" OC	#5 AT 16" OC
11'-0"	WF7	11'-5/8"	2'-0"	#6 AT 8" OC	#5 AT 16" OC
9'-0"	WF5	11'-5/8"	1'-0"	#6 AT 16" OC	#5 AT 16" OC
7'-0"	WF4	11'-5/8"	1'-0"	#5 AT 16" OC	#5 AT 16" OC



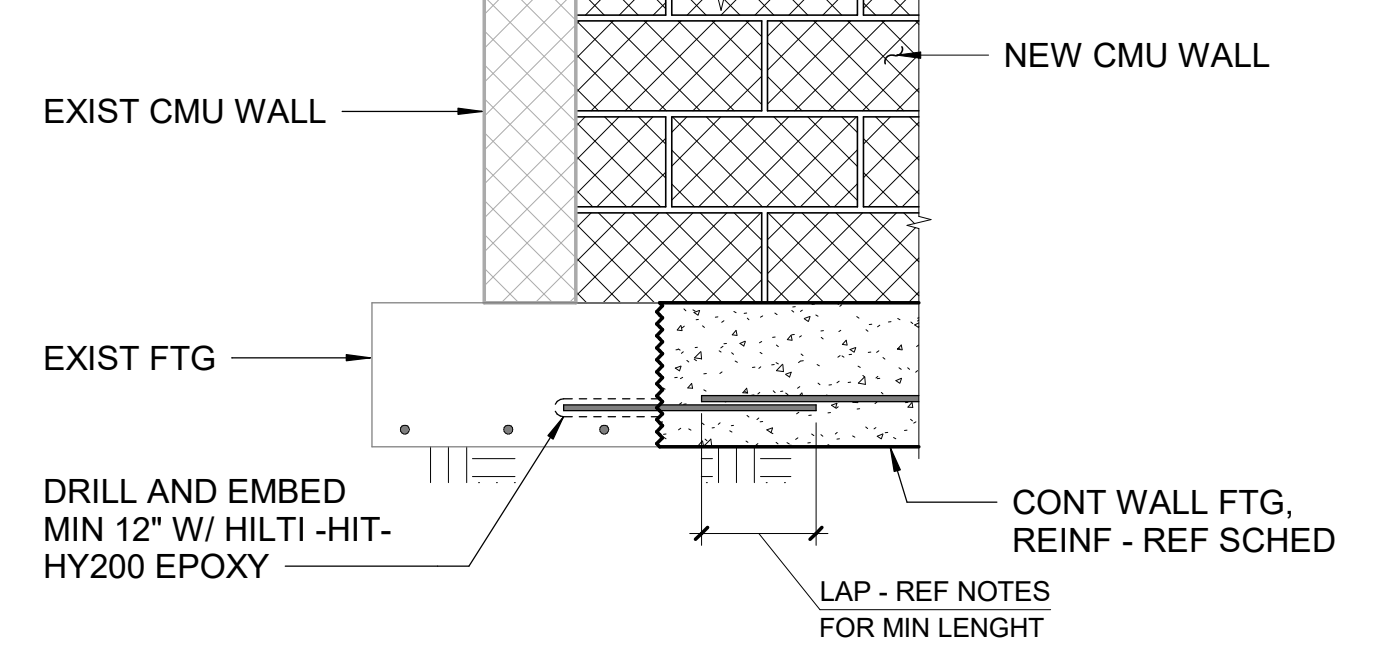
TYPICAL NEW MASONRY WALL & ATTACHMENT



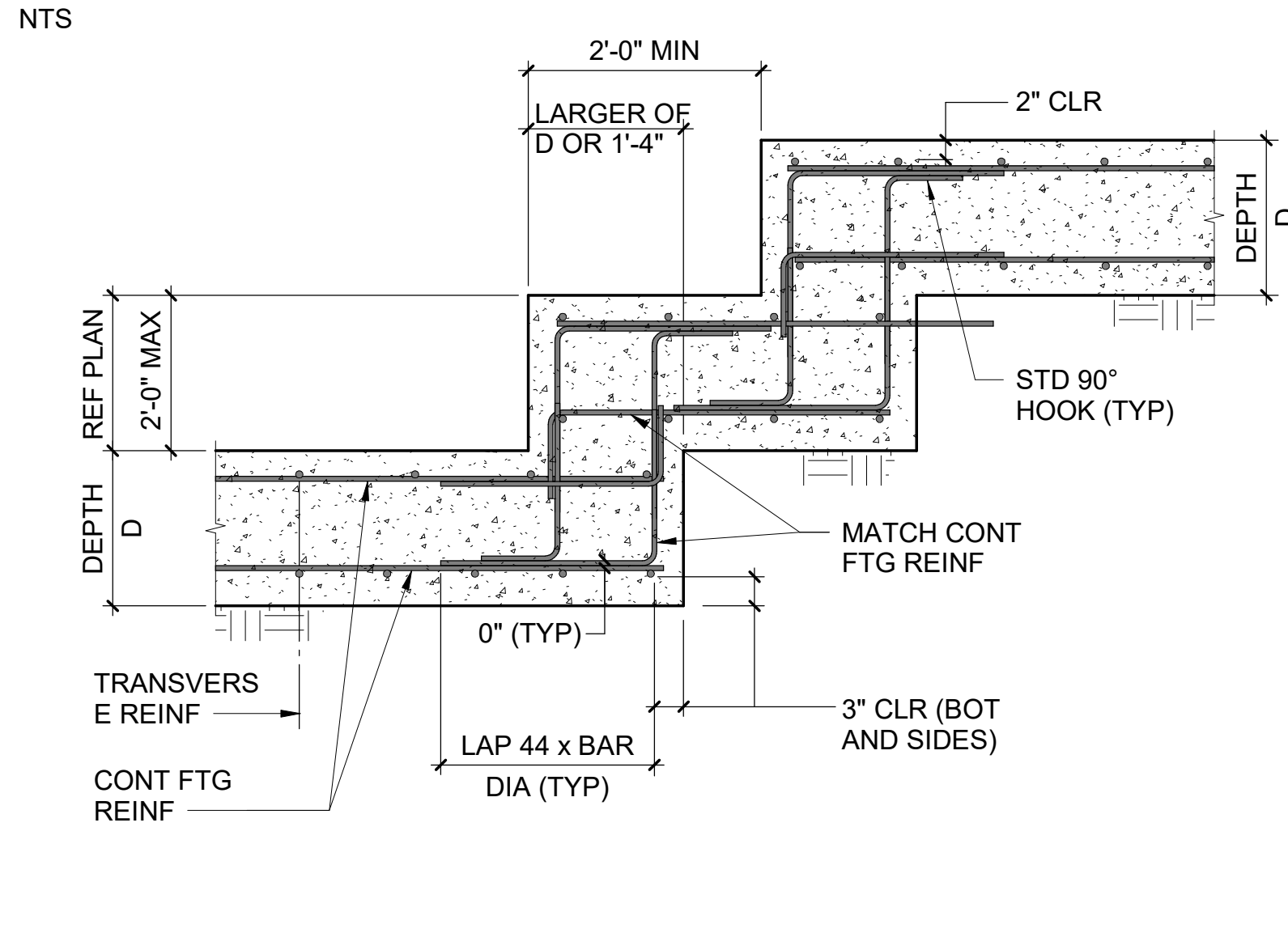
TYPICAL NEW CANOPY



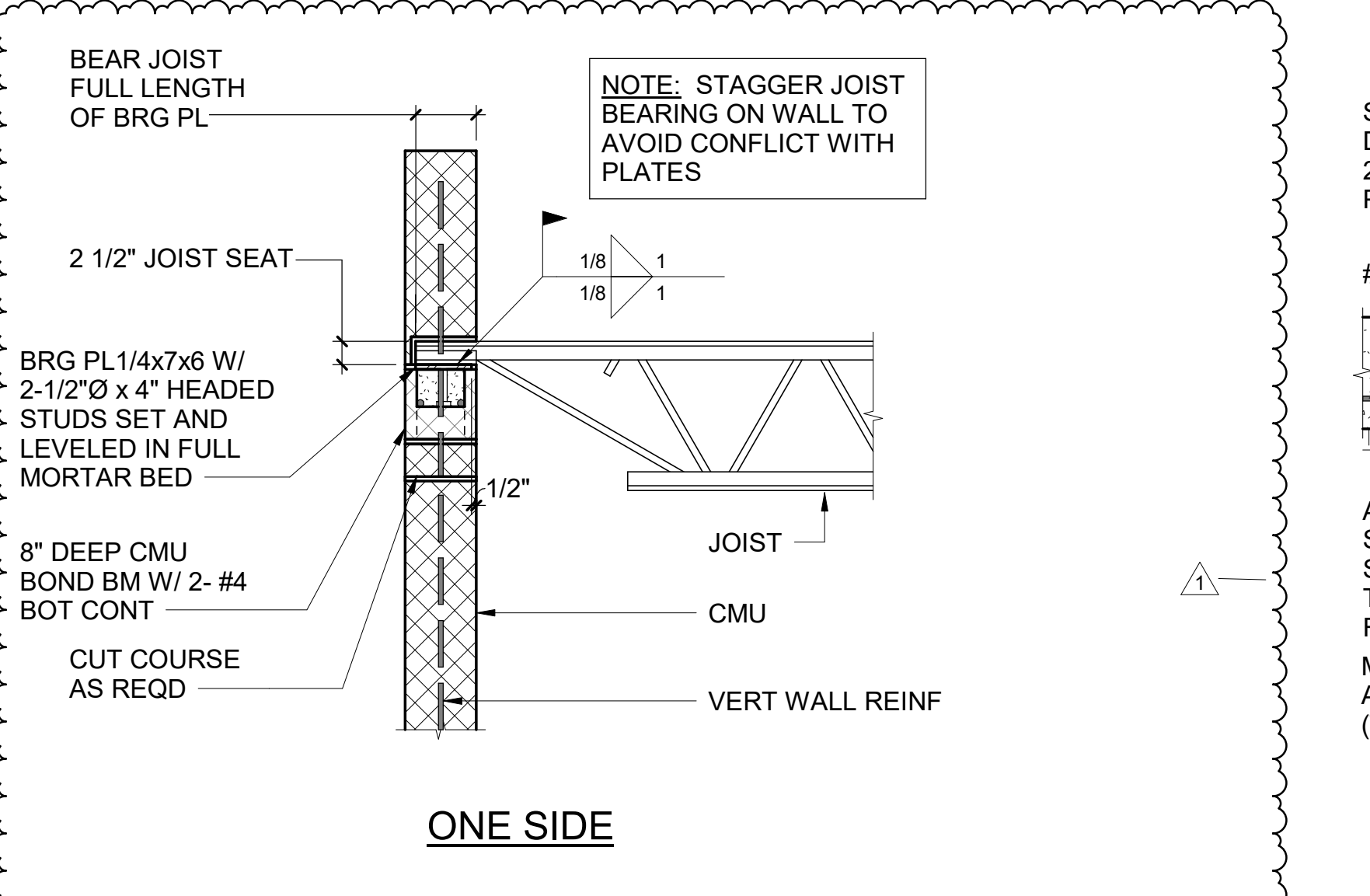
TYPICAL WALL FOOTING DETAIL



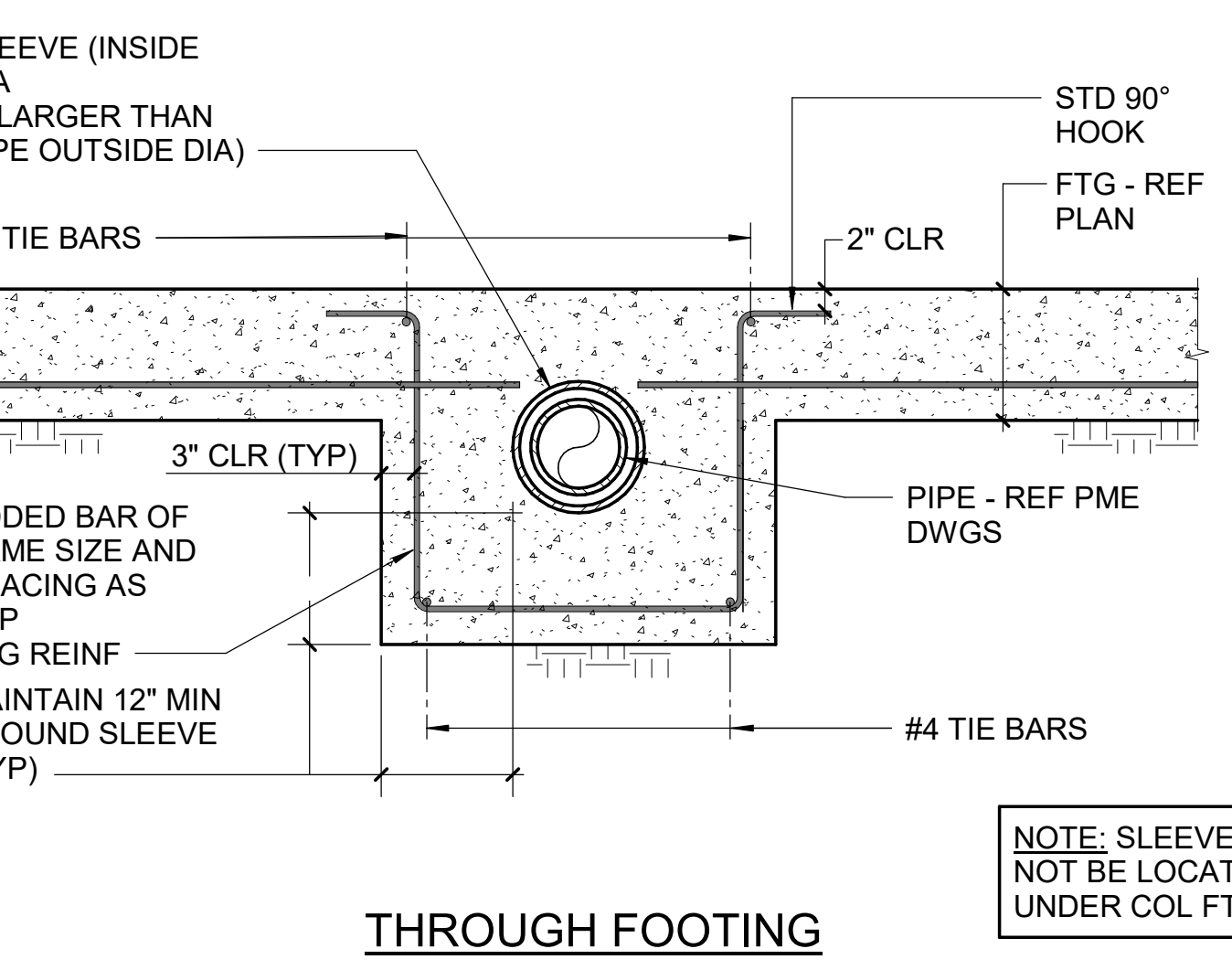
TYPICAL ATTACHMENT NEW FOOTING TO EXISTING FOOTING



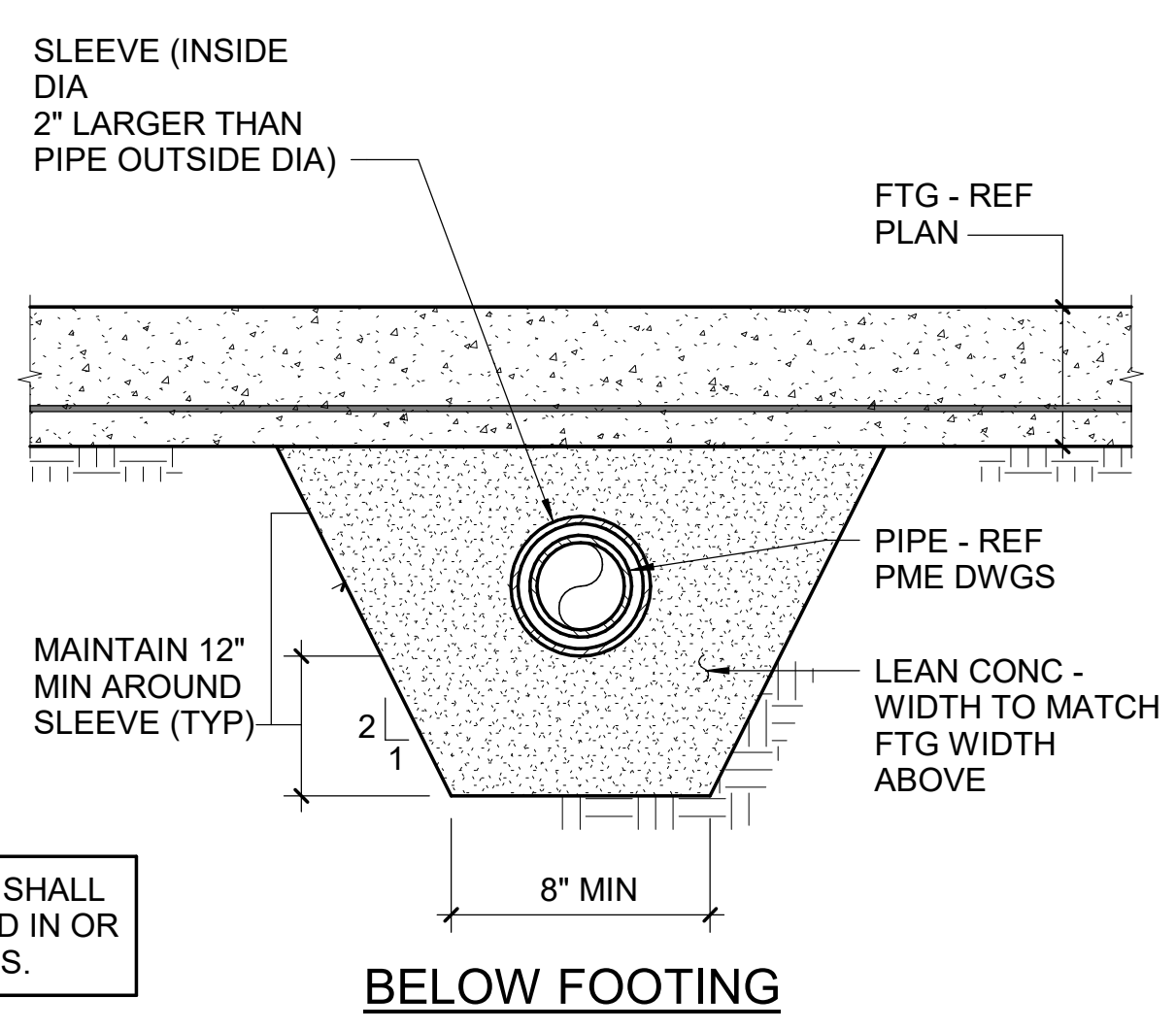
TYPICAL STEPPED FOOTING DETAIL



TYPICAL JOIST BEARING ON WALL



TYPICAL PIPE SLEEVE DETAILS



TYPICAL PIPE SLEEVE DETAILS

lynchmykins
 Structural Engineers
 415 Hillsborough St., Ste 101
 Raleigh, NC 27603
 919.782.1833 - lynchmykins.com

bodhi
 LAND || AND || DESIGN

www.bodhilandanddesign.com
 BODHI Land and Design, PLLC
 918 Minerva Dale Drive
 Fuquay Varina, NC 27526
 704.778.6608
 Plans, maps, specifications, studies, and reports not containing a red ink seal imprint accompanied by an original signature by the licensed professional may have been fraudulently altered and shall not be considered an original copy. All information should be disregarded unless verified by the professional whose signature appears below.
 Copyright Protected 2019.

Project Owner:
LUCK'S CANNERY REDEVELOPMENT - PHASE I
 Seagrove, NC 27341

Stamp:

Issue For:
CONSTRUCTION
 Issue Date:
 07.23.2019

REVISIONS

NO.	REASON	DATE
1	Revision 1	10/4/19

Principal in Charge:
 D. WALKER
 Project Address:
LUCK'S CANNERY - PHASE I
 798 NC Hwy. 705 Seagrove, NC 27341

Project Number:
 201901
 Sheet Title:
TYPICAL DETAILS

Sheet Number:
S501